

DOG POOL

TEN ACRES



RESERVOIR WOOD

REAR OF ASHBROOK

SLOE BRIDGE

THE RAVIN

THE LOST ORCHARD

THE DEN

HORSERADISH FIELD

THE EUCALYPT

BROADMEADOW ORCHARD

BEWDLEY

THE GREEN APPLE TREE

THE WILLOW BRIDGE

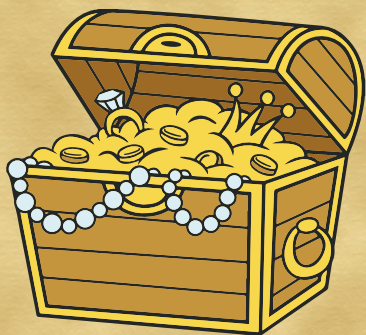
WINTERBROOK MEADOW



CARTLAND

APPLE TREES

MAP KEY



HET NED



EEY TPCAH



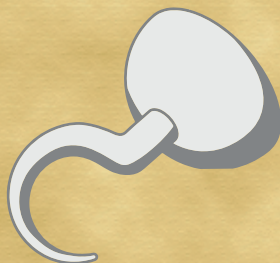
CPATINA



WOSRDS



IPSH



KOHO



GUN SHOTS IN THE DEN

R

S

A

D

V

L

O

F

I

T

N

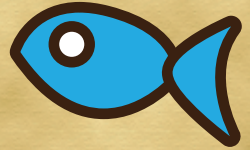
W

P

E



THE RAVINE



F

G

C



A

E

H

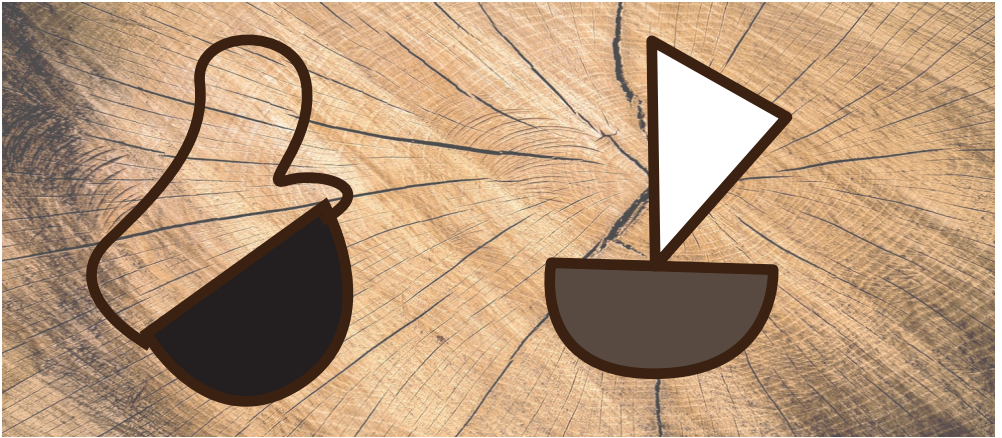
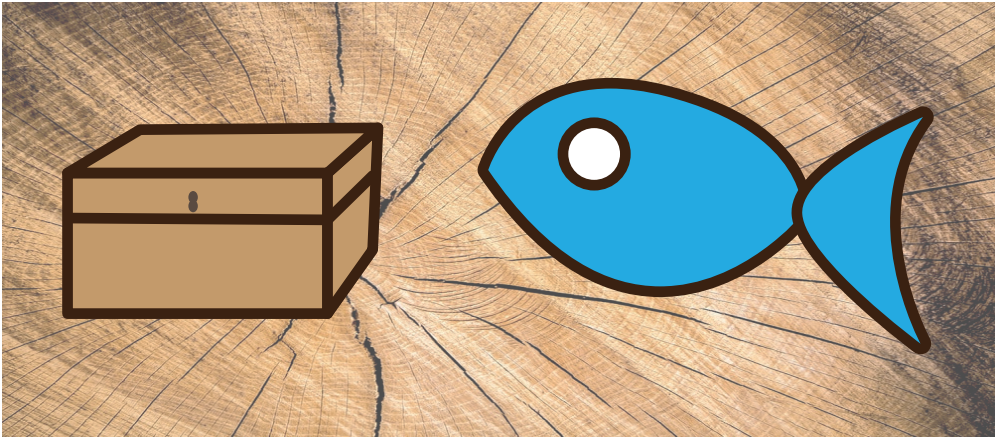


P

T

Q

THE PATHWAY CODE

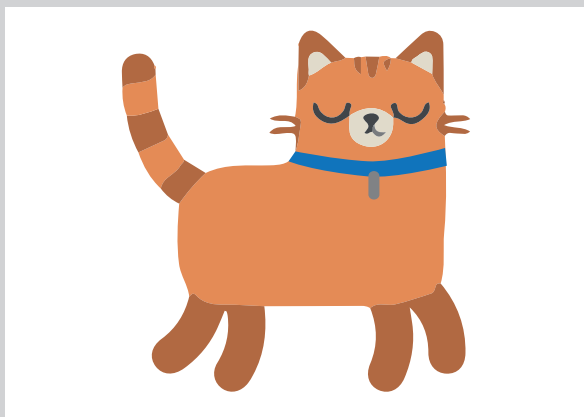


THE PATHWAY KEY



congratulations!

THE CAPTAINS PET



*Mr McStabbins
Fluff*

